




# Science Gateways Community Institute

Proud to have initiated this hackathon series of opportunities with the strong partnership from **OmniBond** (Amy Cannon, Boyd Wilson, Josh Kisse, Cole McKnightl and others)

Acknowledge the active support from:

**ADMI** (Rebecca Caldwell, Munene Kanampiu, Marcus Golden, Al Watkins, Jackie Jackson and others)

**TACC** (Je'aime Powell, Anna Dabrowski, Virginia Trueheart, Geoffrey Reid, Mary Brandenburg and others)

An abstract, colorful sketch of two hands shaking. The drawing uses black ink outlines and vibrant washes of red, orange, yellow, green, and blue. The style is expressive and gestural, with many vertical lines and scribbles. The hands are positioned as if in a firm grip, symbolizing agreement or connection.

Science  
Gateway and the  
SGCI...

...are about  
connections.



```
document.getElementById(div).innerHTML = errEmail;
else if (i==2)
{
var atpos=inputs[i].indexOf("@");
var dotpos=inputs[i].lastIndexOf(".");
if (atpos<1 || dotpos<atpos+2 || dotpos>inputs[i].length-1)
document.getElementById('errEmail').innerHTML = "Invalid email address";
else
document.getElementById(div).innerHTML = "Valid email address";
}
```



Scientific Software to  
Supercomputers...

```
document.getElementById(div).innerHTML += err.html;
else if (i==2)
{
var atpos=inputs[i].indexOf("@");
var dotpos=inputs[i].lastIndexOf(".");
if (atpos<1 || dotpos<atpos+2 || dotpos>=inputs[i].length-1)
document.getElementById('errEmail').innerHTML += "Invalid email address  
";
else
document.getElementById(div).innerHTML += "Valid email address  
";
}
```



...to massive audiences  
of  
researchers and students

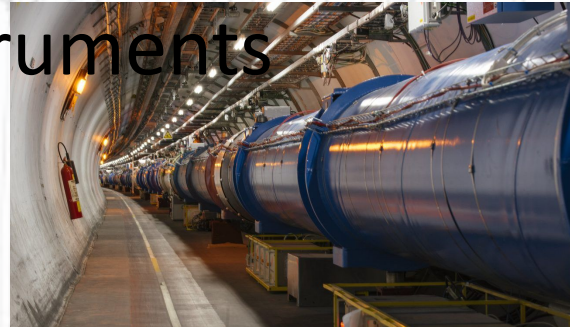




```
document.getElementById(div).innerHTML += err + "  
else if (i==2)  
{  
  var atpos=inputs[i].indexOf("@");  
  var dotpos=inputs[i].lastIndexOf(".");  
  if (atpos<1 || dotpos<atpos+2 || dotpos<input  
document.getElementById('errEmail').innerHTML += "  
else  
document.getElementById(div).innerHTML += "
```



...to expensive instruments



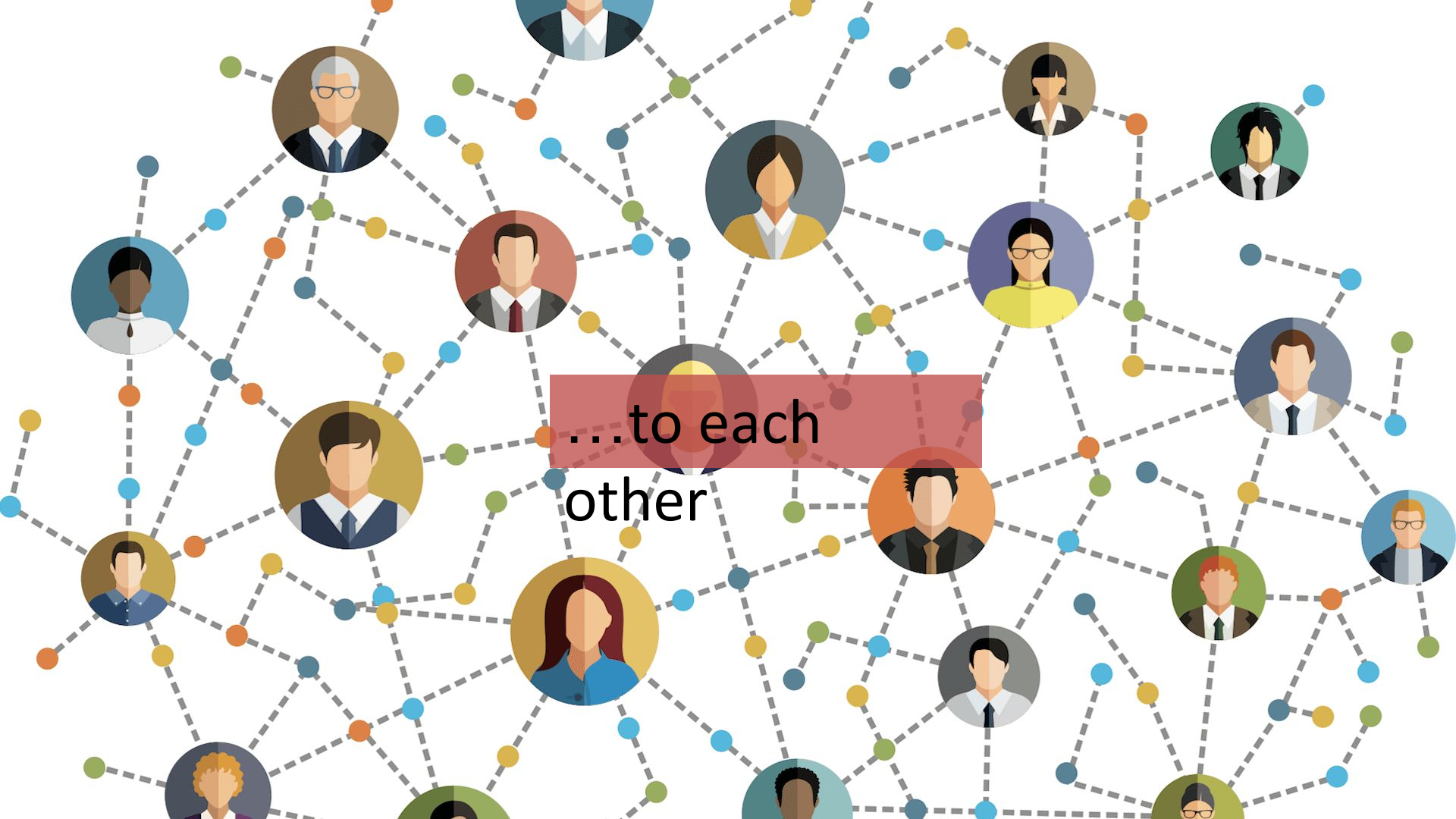
```
document.getElementById(div).innerHTML += errormsg + "\n";
else if (i==2)
{
  var atpos=inputs[i].indexOf("@");
  var dotpos=inputs[i].lastIndexOf(".");
  if (atpos<1 || dotpos<atpos+2 || dotpos>inputs[i].length-1)
  document.getElementById('errMsg').innerHTML += "Invalid email address\n";
else
  document.getElementById(div).innerHTML += "Valid email address\n";
}
```



...to  
data







...to each

other

# An Overview of the Science Gateways Community Institute

- Website Resources & Materials
- Webinar Series
- Gateway Focus Week
- Internships
- Hackathon Programs
- Educational Programs



- Partner Program
- Affiliates Program
- Blog, News & Job Postings
- Community Forum
- Annual Conference
- Community Consensus Tech Forum
- Hands-on Development Support
- Usability Design / Analysis
- Operations & Sustainability Advice from Consultants
- Cybersecurity Consulting
- Catalog of Gateways & Software



# Welcome to the Science Gateways Community



